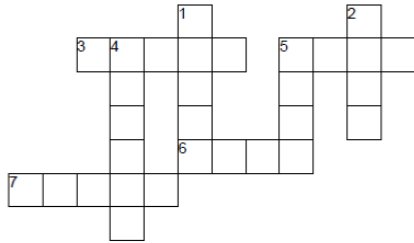


Crossword Puzzle



HORIZONTAL

- 3. A cloth garment worn on the upper part of the body.
- 5. What we eat
- 6. A large, woody plant with branches and leaves
- 7. To give part of what you have with others.

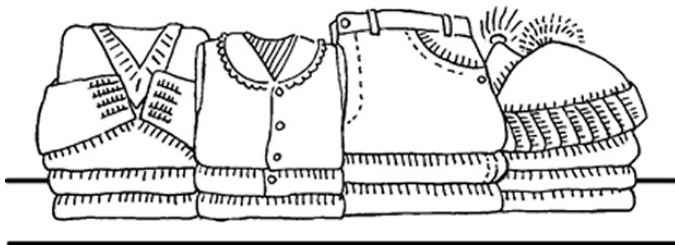
VERTICAL

- 1. The edible, usually sweet food that grows on trees and plants
- 2. A warm outer garment usually worn in winter
- 4. To feel the need for food.
- 5. Flames which are used to burn something

COAT	FIRE	FRUIT	SHARE
SHIRT	FOOD	TREE	HUNGRY

"If you have two shirts, give one to the poor."

Luke 3:11a (NLT)



Children's Worship Bulletin

The Spirit of Christmas

Luke 3:7-18

Word Search Puzzle

O U B V W H I S H O L P E F H
M L I B J Q T Y R Q J I O U Y
I V N I B R N P K R B W V J K
E W Z J I W I D Y S H A R E M
J B W H A Z Z J X L M B X Z N
U G S O B A P T I S M R Q X V
G J L S Y T L C R H H M G Q Z
V O L M M R B O P U A T Q J I
M E O I F E D I R N M B R A P
E B N D X E R Q Z G I V E G K
Y E B H T M C A W R B T C K M
H T M D D P D Y D Y D L X I A
B R E P E N T O S F R U I T J
D R D X O Z O G Y J V O M E P
H M U O F F D F P O O R M V Q

FRUIT	SHIRTS	LIVE	POOR
SHARE	BAPTISM	TREE	GIVE
HUNGRY	GOOD	FOOD	REPENT

Coloring Page

Decoder Puzzle



I can follow Jesus by sharing.

Each number represents a letter of the alphabet. Substitute the correct letter for the numbers to reveal the coded words.

1	2	3	4	5	6	7	8	9	10	11	12	13	14	15	16	17	18	19	20	21	22	23	24	25	26
U	L	N	A	P	X	H	M	J	S	Z	O	C	V	K	Q	D	R	T	F	I	B	E	W	Y	G

1. 10-7-4-18-23 _____
2. 19-18-23-23 _____
3. 26-12-12-17 _____
4. 26-21-14-23 _____
5. 13-7-21-2-17-18-23-3 _____
6. 20-12-12-17 _____
7. 20-18-1-21-19 _____
8. 13-12-4-19-10 _____

CHILDREN FOOD	COATS TREE	GIVE SHARE	FRUIT GOOD
------------------	---------------	---------------	---------------

